



Welcome to France!

INSEEC BBA
INTERNATIONAL PROGRAMS

Create YOUR OWN
**INTERNATIONAL
FUTURE**

Introduction



19
CAMPUSES IN FRANCE AND
ABROAD



40 000
STUDENTS



800
PERMANENT
PROFESSORS



15
SCHOOLS



200 000
ALUMNI

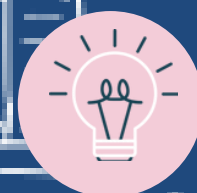


345
RESEARCH TEACHERS

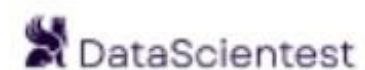


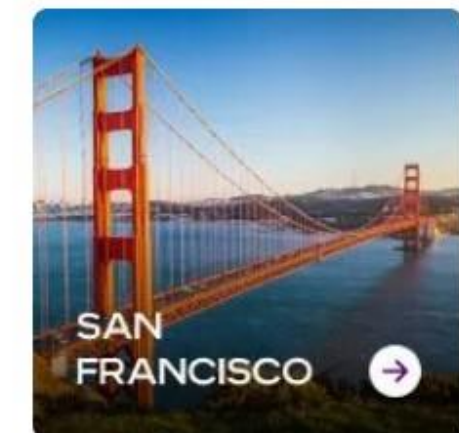
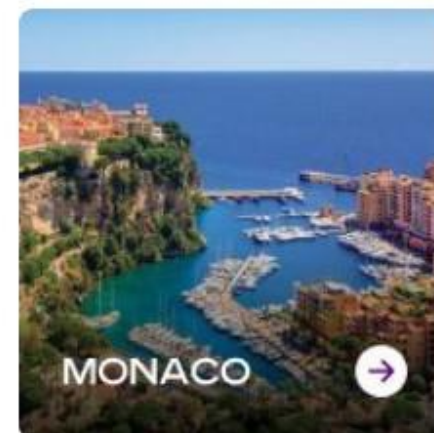
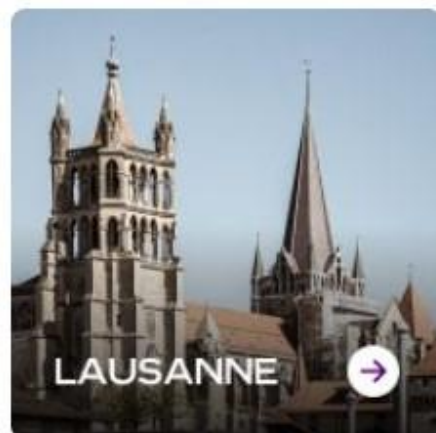
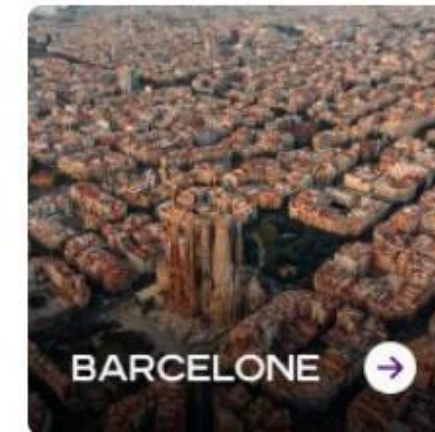
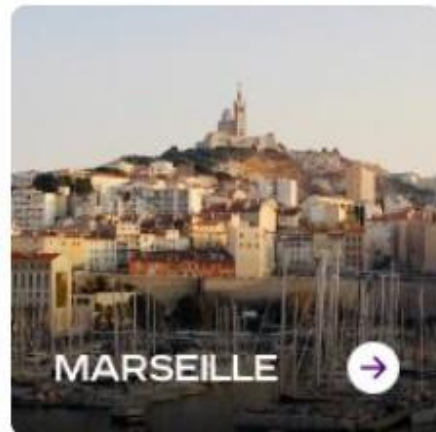
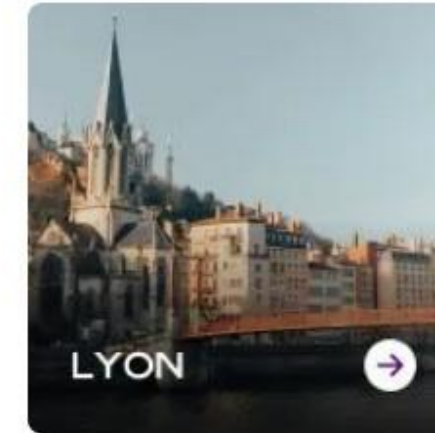
5
FIELDS OF EDUCATION

Management, Engineering,
Communication, Design &
Creation, Political Science &
International Relations



6
INCUBATORS



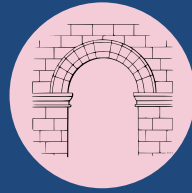


BORDEAUX CAMPUS

Visit the OMNES Education Bordeaux Campus



CAPITAL OF SOUTHWEST OF
FRANCE



BORDEAUX "CITY OF ART AND HISTORY"
AND UNESCO WORLD HERITAGE SITE



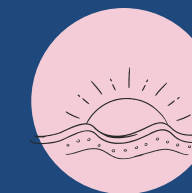
1 CAMPUS IN THE HEART OF THE CITY



WINE CAPITAL OF THE WORLD



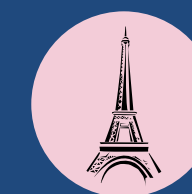
5 000 STUDENTS



***CLOSE TO THE ATLANTIC OCEAN, THE PYRÉNÉES
MOUNTAINS AND SPAIN***



7 SCHOOLS / 68 CLASSROOMS



2 HOURS FROM PARIS WITH THE TGV



BORDEAUX CAMPUS

[Visit the OMNES Education Bordeaux Campus](#)

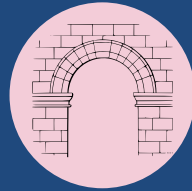


LYON CAMPUS

Visit the OMNES Education Lyon Campus



2ND LARGEST CITY OF FRANCE



UNESCO WORLD HERITAGE
SITE



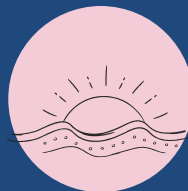
1 CAMPUS IN THE HEART OF THE CITY



A CITY VOTED WORLD CAPITAL
OF GASTRONOMY



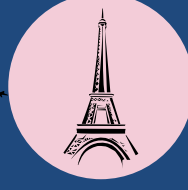
8 000 STUDENTS



*CLOSE TO THE ALPS MOUNTAINS,
THE FRENCH RIVIERA, SWITZERLAND
AND ITALY*



10 SCHOOLS / 80 CLASSROOMS



2 HOURS FROM PARIS WITH THE TGV



LYON CAMPUS

[Visit the OMNES Education Lyon Campus](#)



THE NEW INSEEC BBA PARIS CAMPUS HAS OPENED IN PARIS-LA-DEFENSE, EUROPE'S LARGEST BUSINESS DISTRICT

Visit OMNES the Education Paris Campus

Opening for Exchange students in 2025!



PARIS CAMPUS

Visit OMNES Education Paris Campus



OUR SCHOOL'S VALUES

160 PARTNER
UNIVERSITIES

OPENING
TO THE INTERNATIONAL
(BAC+4 FORMAT)



PEDAGOGICAL
EXPERTISE
(STATE VISA)



EMPLOYABILITY



INSEEC BBA:

INSEEC BBA Academic Offer

IN THE TOP 10 OF BBA DEGREES IN FRANCE

Our program has triple recognition:

- A **VISA** issued by the French Ministry of Higher Education and Research
- A **level 6 RNCP** title issued by the French Ministry of Labor
- **INSEEC BBA proud participant in the Erasmus Charter for Higher Education (ECHE)**, the quality framework for higher education institutions participating in the Erasmus+ program.

The **international format** of our Degree corresponds to the Anglo-Saxon system of graduation

The recognition granted to our Diploma is a **guarantee of the pedagogical quality** of our 4-year course and allows a rapid and promising professional integration



DISCOVER THE INSEEC BBA

INSEEC BBA Academic Offer

- International identity consolidated since 1988: 160 partner universities all over the world
- Wide-ranging skills in all aspects of **Business, Management and Administration**
- Immersive and innovative pedagogy in project mode named **Learning by Doing**: innovative teaching method based on group work and achievements
- Progressive **professionalization** (internship in France and abroad each year) for a perfect preparation for the international job market
- A school on a **human scale** with a dynamic **student and community life**



JOIN OUR ANNUAL EVENT: THE INSEEC BBA INTERNATIONAL WEEK!

INSEEC BBA Academic Offer

FOR WHO?

Lecturers in the field of **Business Administration & International Management:**
Global & Digital Marketing, Finance, Data Management, Entrepreneurship,
Leadership, Geostrategy, Negotiation, Corporate Strategy, International
Business Ethics, Brand Management & Personal Branding, Communication, Wine
Business, Luxury, etc.

PROGRAM

Multicampus event

Teaching and jury for academic challenges (600 1st-Year and 2nd-Year students)

Workshops

Benchmarking sessions on **educational practices**

Networking activities

Discovery of the local market

INTERNATIONAL WEEK

Create YOUR OWN
INTERNATIONAL
FUTURE



Lyon-Bordeaux



ACADEMICS

INSEEC BBA Academic Offer

Students may choose to attend one-semester or one-year programs:

FALL SEMESTER PROGRAMS

BELCO (Bordeaux Campus)

ATLANTIS (Lyon Campus)

The perfect exchange program (Full English)

BBA3 and BBA4

Share the French students' experience (French + English or Full English)

SPRING SEMESTER PROGRAM

BBA3

A program for both international and French students: it's all about sharing (Full English)



ACADEMICS

INSEEC BBA Academic Offer

STUDY

35 students by class

International & French students in mixed classes

SEMESTER DATES

Fall: beginning of September - mid-December

Spring: mid-February - end of May

Semester break: 2-week break at Christmas

1-week break during each semester

APPLICATION REQUIREMENTS

Transcript of Records (in English)

Proof of English Proficiency (B2)

Identity Card or Passport

International Health Insurance

Passport Photo

GRADES

Grading scale out of 20

Minimum passing grade: 10/20





COST OF LIVING IN LYON / BORDEAUX

1

HOUSING
€700-1000
+ utilities
per month

2

TRANSPORT
€40 per
month

3

FOOD
€200 per
month

4

PERSONAL
EXPENSES
€160-200 per
month

TOTAL: €1200-1500

[Accommodation and Facilities Guides](#)

[OMNES Education Welcome Guide](#)

[Help center \(lavin-france.com\)](#)



HOUSING

INSEEC BBA have partners to
facilitate accommodation research

APL / CAF: STUDENT HOUSING AID

Foreign students studying in France are
eligible for housing benefits

If you rent an apartment alone you can
receive: €190 / month
With flatsharing: €90 / month

INSEEC BBA

INTERNATIONAL RELATIONS

 INTERNATIONAL.BBAINSEEC@INSEEC.COM



Florence CARLOT
Bordeaux Campus
fcarlot@omneseducation.com
+33 (0)5 57 87 70 47



Sarah FREYNE
Bordeaux Campus
sfreyne@omneseducation.com
+33 (0)5 57 87 70 45



Manon TURLIN
Lyon Campus
mturlin@inseec.com
+33 (0)4 78 27 50 16



JOIN US AND FOLLOW OUR NEWS!

