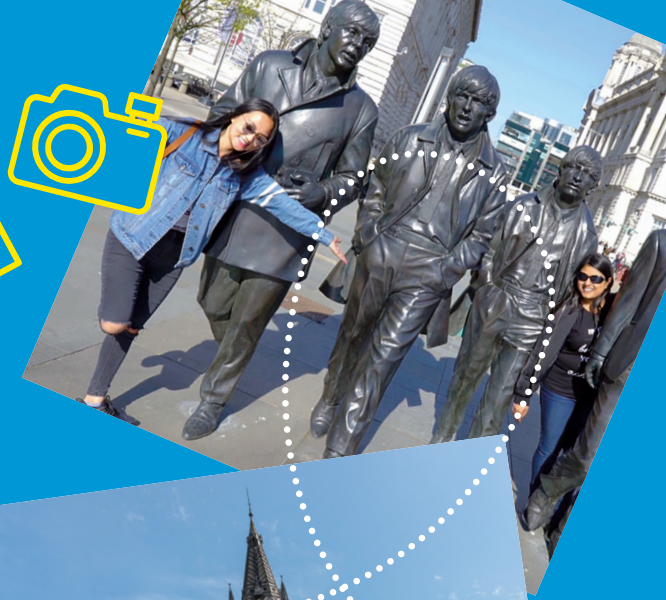
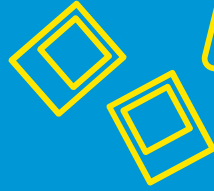




UNIVERSITY OF  
LIVERPOOL



# GLOBAL OPPORTUNITIES

AT THE UNIVERSITY  
OF LIVERPOOL



We are the original redbrick.  
[Liverpool.ac.uk](http://Liverpool.ac.uk)



# Contents

Welcome	01
Liverpool and the University	02
Support network	03
Our programmes	04
Calendar, exams and accommodation	06
Culture Calendar	07
Subject list	08
Meet the team	09
Contact us	09

Welcome to the University of Liverpool! We're delighted that you're considering our University as a destination as you undertake a defining experience in studying abroad. This guide is intended to provide an overview of the programmes we offer, key dates, fees and processes, and to introduce you to our incredible University and city.

### University of Liverpool: At a glance

- Founded in 1881, we are the original 'redbrick' university
- A founding member of the prestigious 'Russell Group', the top 24 research intensive universities in the UK
- Ranked in the top 200 universities in the world (QS World University Rankings 2023)
- 33 subject areas across the faculties of Health and Life Sciences, Humanities and Social Sciences and Science and Engineering
- Our Management School is one of an elite group of institutions worldwide to hold the 'triple crown' accreditation from AACSB, AMBA and EQUIS
- Over 27,000 students on campus, approx. 7,700 international students and over 400 inbound study abroad students each year
- A campus based in the centre of the city, a perfect location for students to experience their new home.

### Distance from Liverpool

	Miles	Kilometres
Manchester	32	50
Leeds	65	105
Birmingham	80	126
York	95	140
Newcastle	125	200
Cardiff	135	215
Bristol	137	220
Edinburgh	175	280
Glasgow	177	285
London	180	290
Plymouth	220	350
Norwich	238	383
Brighton	271	436



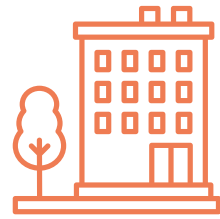
*"When I first started this adventure, I never thought I would meet all these people. I never thought I would love my housemates the way I do, and I had no idea it would be possible to make such lovely friends."*

Mariana – Nova University, Lisbon, Portugal





# Liverpool and the University



## Our city

From its humble beginnings tracing back to 1190, Liverpool went on to become one of Britain's most important cities. Following its rapid expansion throughout the 18th Century, mainly due to its busy port and popular trade routes with Africa, the West Indies and the Far East, Liverpool became known as 'the New York of Europe'.

During the early 1960s the city became internationally renowned for its youth culture, particularly music and the distinctive 'Merseybeat' sound which became synonymous with The Beatles. Music is still very much a key part of Liverpool, in fact it is a designated UNESCO City of Music.

Whether you prefer to watch acts in an arena or theatre, smaller independent venue, or one of the many live musicians playing in pubs and bars throughout the

Liverpool's impressive waterfront and Royal Albert Dock is one of the most visited multi-use attractions in the UK, with over four million visitors per year. And with more galleries and museums than any city in the UK outside London, it's easy to fall in love with Liverpool's modern, vibrant culture and rich heritage.



*"Thank you Liverpool for the culture shock, best friends, and endless memories. I couldn't think of a better place to have spent the last six months learning and growing into the person I am. I am so grateful for everything I have seen and experienced in the UK and I wouldn't trade one second of it for the world."*

Abby – Northern Arizona University, USA

**Seventh best city in the world.**

Time Out, 2024



## Life on campus

Students who choose Liverpool as their study abroad destination will enjoy an amazing, life-changing experience.

As soon as you join the University you automatically become a member of the award winning Liverpool Guild of Students, with access to over 200+ student societies, various sports teams and a wide range of volunteering opportunities. Participating in any, or a whole range of these activities on offer, will help you to develop your skill set and boost your CV.

Our Sports and Fitness Centre at the heart of campus offers a wide variety of facilities and services including a 25-metre swimming pool, squash courts, fitness suite, bouldering wall and dance studios. There are also daily group exercise classes for all levels of ability.

The University has two major libraries, the Sydney Jones and the Harold Cohen, which between them contain over 2.5 million resources. The libraries are open 24/7 during term time. Students have access to over 2,000 PC's across campus, high speed Wi-Fi, virtual chat and project work support.



# Support network



## The Global Opportunities team

The Global Opportunities team will be the main central University contact for you throughout your experience, from application to returning home. The team can be contacted via email, phone or at our student facing drop in desk on campus.

## Global Opportunities buddies and ambassadors

All inbound students have the option to be paired with a Liverpool student who has studied abroad themselves, helping to ease in to life in our great city and University. Buddies are requested during the application process and you will be contacted by your buddy prior to your arrival in Liverpool.



## Global Opportunities Academic Advisors and student experience teams

Every subject area at the University has a Global Opportunities Academic Advisor – an academic based in the school(s)/ department(s) that you will be studying in. They can assist with any academic related queries. Each school also has a student experience team who will help with queries on timetables, exams or any other administrative questions.

## International Advice and Guidance team

If you have any queries relating to visas, working during your studies, or anything related to being an international student our International Advice and Guidance Team is there to support you. [liverpool.ac.uk/studentsupport/visas-and-immigration/](https://liverpool.ac.uk/studentsupport/visas-and-immigration/)

## Health

Brownlow Health is a full general practice on campus offering medical services to students. They can be contacted on **T: +44 (0)151 285 4578**



## Religion

There are places of worship for virtually all faiths in Liverpool. The University has Anglican, Catholic, Jewish, Methodist and Muslim chaplains who support the University's faith communities.

## Counselling service

We understand that sometimes student life can be stressful and it can help to talk to a professional. Whilst you are studying abroad with us, you will have full access to our counselling service. Our experienced counsellors offer professional, confidential support where you can talk about any issues that may be affecting your studies or general wellbeing. [liverpool.ac.uk/counserv](https://liverpool.ac.uk/counserv)

## Childcare

There is a 68-place Children's Centre on campus, which provides day care and play schemes during the school holidays. [kidsinbloom.co.uk/kib-university-of-liverpool](https://kidsinbloom.co.uk/kib-university-of-liverpool)

## Support for disabled students

We work closely with academic departments and students to ensure you can be supported as fully as possible. Every student has their own needs and we will work with you to establish a support system that works for you.

**E: [dsteam@liverpool.ac.uk](mailto:dsteam@liverpool.ac.uk)**  
**[liverpool.ac.uk/studentsupport/disability](https://liverpool.ac.uk/studentsupport/disability)**

## The Global Opportunities Society

Global Opportunities Society is a society that welcomes everyone. Those who are studying here at Liverpool on their mobility, those who have been or are preparing for their mobility and those who want to know more about where they could go and learn what amazing experiences are on offer through fun socials and culture nights!



# Our programmes

## Global Opportunities at the University of Liverpool

As a globally focused university we are proud to welcome hundreds of students every year to study, research or participate in our International Summer School (ISS) here in Liverpool. Whatever your study abroad ambitions, there is a great option for you to choose!

You may study via exchange if our institutions have an existing exchange partnership.

All students are eligible to study as visiting fee-paying students even if we do not hold an existing agreement. If your university would like to enter a partnership agreement with the University of Liverpool, students would be eligible for a 10% discount on tuition fees.

## How to apply

You can apply by completing our online application process:

[liverpool.ac.uk/global-opportunities/inbound/study-in-liverpool/how-do-i-apply/](https://liverpool.ac.uk/global-opportunities/inbound/study-in-liverpool/how-do-i-apply/)

If you are coming through exchange, you must first be nominated by your home university via our online portal. A link to continue the application process will automatically be sent to nominated students.

## Entry requirements

- A minimum cumulative GPA of 3.0 (or equivalent)
- Students have access to our full module catalogue though some modules may have pre-requisites
- If your first language is not English you will need to show that you have an appropriate English language qualification. This is not required if you are visiting from a majority English speaking country as defined by UKVI or you are a non-native English speaker from a partner in Australia, New Zealand or the USA.

Required IELTS scores	Full programme
Humanities and Social Sciences	6.5 overall with minimum of 5.5 in each component
Science and Engineering	6.0 overall with minimum of 5.5 in each component

## Semester and Full Academic Year

You can visit for either one semester or the full academic year. Each semester students will study for up to 60 UoL credits (standard workload) and have access to our full range of modules across the University to suit your academic needs, subject to timetabling. Some modules may also have pre-requisites.

## 2024–25 Tuition fees

- One Semester: £9,650
- Full Year: £17,700

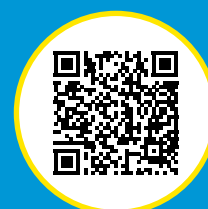
Please note, if you are a student coming from one of our partner universities then you are eligible for a 10% discount.



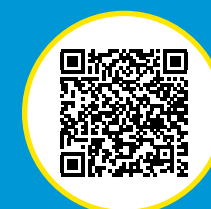
*"Though I have not been here long, I have already accumulated a list of things I love about this town. Every day I see, hear or experience something new and I know this list will continue to grow".*

Amishaa – Monash University, Australia

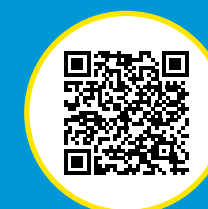
## More Information



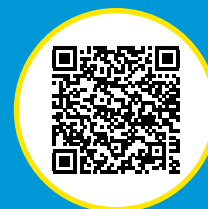
Programmes



How to apply



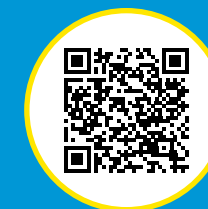
Semester and Full Academic Year



Study Abroad + English



Summer Research Programme



International Summer School

## Study Abroad + English

If you need to improve your English to meet our English language requirements, or you would like to enhance your language skills and confidence before studying on our Semester One or Full Academic Year programme, you can attend our 6- or 10-week English language Pre-session courses in the summer.

You can indicate your wish to join the Pre-session programme within the standard application form. We will then confirm if you will attend the 6- or 10-week course based on your current level of English. Once you arrive in Liverpool there will be a range of cultural activities and summer events that you can attend to help you settle in to UK life.

Required IELTS scores	6-Week Pre-session	10-Week Pre-session
Humanities and Social Sciences	6.0 overall with minimum of 5.5 in each component	5.5 overall with minimum of 5.5 in each component
Science and Engineering	5.5 overall with minimum of 5.5 in each component	5.5 overall with minimum of 5.0 in each component

## Summer Research Programme

Our Summer Research Programme gives you the opportunity to gain invaluable experience working alongside a University of Liverpool academic. Closely supervised by the academic, you will assist on an ongoing research project and gain 15 UoL credits in the process.

Projects change year on year and you have the option to join us for a period of 4, 8 or 12 weeks during the summer months, while having full access to university accommodation, facilities and social events. You will spend approximately 150 hours working on the research project, regardless of the number of weeks you are here. Shorter duration projects will be conducted at a more intense pace.

This opportunity is available via exchange or as a visiting fee-paying student.

## International Summer School

Our International Summer School runs annually between June to July with options for you to join us on campus or study virtually. The programme lasts for either 3 or 6 weeks, with each 3-week block earning students up to 15 UoL credits.

You have the flexibility to either specialise in one academic area or mix and match modules across disciplines. Modules range from Shakespeare to the business and culture of Football, the Vikings to Global Health – and many more!

The programme is designed to give an authentic Liverpool experience from our small-group teaching to supported social programme. It also includes a strong focus on local and UK culture, aided by organised trips in the city and around the UK, as well as the subjects on offer in the module selection. You can be diverse and flexible in building your programme, ensuring your needs and interests are met.



*"It's not just about gaining a different perspective on your studies either, studying abroad has transformed the way I think about my family, my friends and the wider world".*

Hannah – Monash University, Australia



# Calendar, exams and accommodation

## Academic calendar 2024–25 Semester One

	Start	End
Weeks 1–12	23 September 2024	13 December 2024
Winter break	16 December 2024	3 January 2025
Exam period	6 January 2025	24 January 2025

## Semester Two

	Start	End
Weeks 1–8	27 January 2025	4 April 2025
Easter break	7 April 2025	25 April 2025
Weeks 9–12	28 April 2025	9 May 2025
Exam period	12 May 2025	30 May 2025

### Exam period

Students from partner universities in the USA, Canada, Hong Kong and Singapore are able to sit Semester One Liverpool exams at their home university. All other Semester One students, and all students taking Semester Two exams, must be present at the University of Liverpool to sit their exams. This does not apply to Semester One students taking coursework only modules, or students sitting online exams.

## Accommodation

As winner of the ‘Best University Accommodation’ award 2021 (National Student Housing Awards), the University has a great range of accommodation options including the popular Study Abroad Village. The Study Abroad Village (Tudor Close and Melville Grove) is open to both inbound students and home students from Liverpool who have studied abroad. Additionally, there are a range of accommodation options both on-and-off campus to choose from.

Full Year and Summer students are guaranteed university accommodation. Semester only students can also apply and rooms are allocated through a lottery system. Semester only students have a higher chance of sourcing accommodation in semester two.

All of our halls have a supportive and safe environment so you can feel at home from the very beginning. Our team of Residential Advisors and Hall Student Committees are there to enhance the residence experience and you will be invited to a programme of social activities to help settle in to life in Liverpool.

### Tudor Close and Melville Grove pricing:

	Room cost (per week)	Semester cost
Single bed	£161.28	£3064.32 –£3225.60
Double bed	£169.12	£3213.28 –£3382.40

# Culture Calendar

We know that studying abroad isn’t just about what goes on inside of the classroom and we’re thrilled when visiting students can experience UK culture first hand. To help, every year we run our Culture Calendar – which is a great way for you to be introduced to Liverpool, the wider UK and to make friends through our events and day trips.

These experiences are either free or are offered at a reduced cost, with a focus on showing the ‘locals perspective’ of Liverpool. They are also an easy way to visit some of the highlights our island has to

access without the private transport we provide.

You will be invited to some of the coolest venues in the city for our Welcome and Farewell celebrations at either end of the semester. A series of culture focused events also take place on campus throughout our programmes.

*“Joining clubs and societies on campus is a fantastic way to make new friends and meet-ups usually involve food! I’ve been able to meet people from lots of different countries. This University has hundreds of societies so there’s bound to be one that catches your fancy”.*

Rochelle – Monash University, Australia



# Subject list



- Accounting, Finance and Economics
- Aerospace Engineering
- Archaeology, Classics and Egyptology
- Architecture, Building and Planning
- Biological and Biomedical Sciences
- Business and Management
- Chemistry
- Communications, Film and Media
- Computer Science
- Data
- Earth Sciences
- Electrical Engineering and Electronics
- Engineering
- English
- Environmental Sciences
- Game Design
- Geography
- Health Sciences
- History
- Irish Studies
- Languages and Cultures
- Law
- Mathematics
- Mechanical Engineering
- Music
- Philosophy
- Physics
- Politics
- Psychology
- Sociology, Social Policy and Criminology

For further information on all subjects and programmes see [liverpool.ac.uk/study/subjects](https://liverpool.ac.uk/study/subjects)

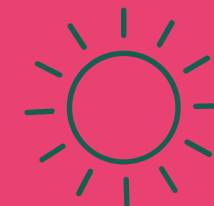


*"My favourite thing about living in Liverpool was the culture around the city. Everyone in the city and at the University was so kind and welcoming. Most importantly they were all proud of their city and just wanted to show that to everyone. It was an amazing environment to be in".*

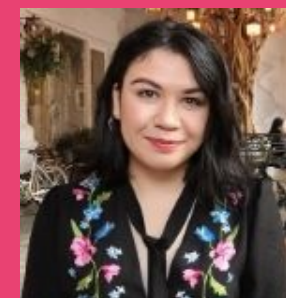
Brett – Dalhousie University, Canada



# Meet the Team



**Josh Evans**  
Global Opportunities  
Manager (Inbound)



**Melina Fiol**  
Global Opportunities  
Adviser



**Rachel Finney**  
Global Opportunities  
Adviser



**Grace Edge**  
Global Opportunities  
Adviser



**Lanxin (Lena) Wu**  
Global Opportunities  
Adviser



**Niall O'Donnell**  
Global Opportunities  
Coordinator  
(Marketing & Events)



**Alicia Shanahan**  
Global Opportunities  
Assistant

# Contact us

Please direct any queries to **E: [saenq@liverpool.ac.uk](mailto:saenq@liverpool.ac.uk)**  
**T: +44 (0) 151 794 8080** or



**[liverpool.ac.uk/  
inbound](https://liverpool.ac.uk/inbound)**



*"I chose to study abroad in Liverpool partially because I thought it wouldn't be too overwhelming as English is spoken in the UK and there are a lot of similarities to the US. I also heard that London can be expensive and might not reflect the culture of the UK as a whole. Liverpool was small enough that I knew I could get to know it well, but large enough that there was lots to explore and be introduced to".*

Emmalie – Boston College, USA



## Get to know us

Go online [liverpool.ac.uk](https://liverpool.ac.uk)

The University of Liverpool  
Liverpool L69 7ZX  
E: [saenq@liverpool.ac.uk](mailto:saenq@liverpool.ac.uk)

[liverpool.ac.uk/global-opportunities/inbound/](https://liverpool.ac.uk/global-opportunities/inbound/)

 @LivUniAbroad

 /LivUniAbroad

 @LivUniAbroad

 @LivUniAbroad