



UNIVERSITY OF LATVIA

Erasmus code	LV RIGA01
PIC	999871830
Address	Raina Blvd. 19, Riga, LV-1586, Latvia
Website	https://www.lu.lv/en/
Rector	Professor Indrikis MUIZNIEKS

INTERNATIONAL RELATIONS

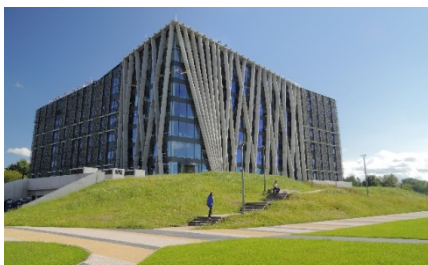
Address	Raina Blvd. 19, Riga, LV-1586, Latvia
Website	https://www.lu.lv/en/admission/for-international-students/exchange/contacts/
Erasmus Institutional Coordinator	Mrs. Aline GRZIBOVSKA
Phone	+371 6703 3997
Fax	+371 6722 5039
E-mail	ad@lu.lv
Head of Mobility Division	Ms. Sintija MACULEVICA
Phone	+371 6703 3968
E-mail	sintija.maculevica@lu.lv
Contact person for outgoing students	Ms. Marta VILKAUSA
Phone	+371 6703 4406
E-mail	marta.vilkausa@lu.lv
Contact person for incoming students	Ms. Liene MEINHARDE
Phone	+371 6703 4350
E-mail	liene.meinharde@lu.lv
Contact person for incoming students (from non EU countries)	Ms. Aleksandra KJAKSTE
Phone	+371 6703 4336
E-mail	aleksandra.kjakste@lu.lv
Contact person for IIA Erasmus+ agreements with Programme Countries	Ms. Marta VILKAUSA
Phone	+371 6703 4406
E-mail	marta.vilkausa@lu.lv
Contact person for IIA Erasmus+ agreements with Partner Countries	Ms. Aleksandra KJAKSTE
Phone	+371 6703 4336
E-mail	aleksandra.kjakste@lu.lv



INFORMATION FOR INTERNATIONAL STUDENTS	
Academic calendar 2022/2023	
Autumn semester	
<i>registration week</i>	29.08.2022 - 04.09.2022
<i>studies</i>	05.09.2022 - 23.12.2022
<i>Christmas and New Year holidays</i>	24.12.2022 - 01.01.2023
<i>individual studies and exams</i>	02.01.2023 - 27.01.2023
Spring semester	
<i>registration week</i>	31.01.2023 - 05.02.2023
<i>studies</i>	06.02.2023 - 02.04.2023
<i>Easter holidays</i>	03.04.2023 - 10.04.2023
<i>studies</i>	11.04.2023 – 04.06.2023
<i>individual studies and exams</i>	05.06.2023 - 02.07.2023
Website	https://www.lu.lv/en/studies/study-process/academic-calendar/
Application deadlines	Autumn Spring May 15 th November 15 th
Nomination deadlines (by e-mail exchange@lu.lv)	Autumn Spring April 15 th October 15 th
Language of instructions	The official language of instruction is Latvian. Courses for international students are offered in English.
Language requirements	<u>English B1</u> Students applying for the following faculties have additional language requirements: Faculty of Humanities <i>Bachelor level programmes:</i> English philology (English B2) Modern Languages and Business Studies (English B2) French philology (French, Italian or Spanish B1) German philology (German B1) Russian philology (Russian B2) <i>Master level programmes:</i> English philology (English B2) Romance studies (French, Italian or Spanish B2) German philology (German B2) Russian philology (Russian B2) Translation "Latvian-English-Russian" studies - English B2 and Russian B2



	<p>Faculty of Education, Psychology and Art Psychology (English B2)</p> <p>Faculty of Medicine Medicine and Dentistry programmes: English B2</p>
Application information for incoming students	https://www.lu.lv/en/admissions/exchange-studies/
Accommodation information	https://www.lu.lv/en/studies/student-life/accommodation/
Courses for incoming students	https://www.lu.lv/en/gribustudet/arzemju-studentiem-eng/exchange/courses/
Immigration information	https://www.lu.lv/en/gribustudet/arzemju-studentiem-eng/exchange/visas/
General and Practical information for incoming students	https://www.lu.lv/en/admission/for-international-students/degree/advice/
Credit points	1 Latvian credit point = 1.5 ECTS
Approx. expenses per month	
Accommodation	100 – 300 EUR
Food & drinks	300 EUR
Books	20 EUR
Local Transportation	30 EUR
<i>Total</i>	<i>450 – 650 EUR</i>





INTERNATIONAL COORDINATORS AT FACULTIES

FACULTY OF BIOLOGY	
Departmental Coordinator	Assoc. prof. Liga OZOLINA-MOLLA
E-mail	liga.ozolina-molla@lu.lv
FACULTY OF CHEMISTRY	
Departmental Coordinator	Doc. Agnese OSITE
E-mail	agnese.osite@lu.lv
FACULTY OF COMPUTING	
Departmental Coordinator	Asoc. prof. Zane BICEVSKA
E-mail	zane.bicevska@lu.lv
FACULTY OF BUSINESS, MANAGEMENT AND ECONOMICS	
Departmental Coordinator	Ms. Agne Ellere
E-mail	agne.ellere@lu.lv
FACULTY OF EDUCATION, PSYCHOLOGY AND ART	
Departmental Coordinator	Ms. Alise Olesika
E-mail	alise.olesika@lu.lv
FACULTY OF GEOGRAPHY AND EARTH SCIENCES	
Departmental Coordinator	Prof. Zaiga KRISJANE
E-mail	zaiga.krisjane@lu.lv
FACULTY OF HISTORY AND PHILOSOPHY	
Departmental Coordinator	Dr. Artis SVECE
E-mail	artis.svece@lu.lv



INTERNATIONAL COORDINATORS AT FACULTIES

FACULTY OF HUMANITIES	
Departmental Coordinator	Ms. Jekaterina CERNEVSKA
E-mail	jekaterina.cernevska@lu.lv
FACULTY OF LAW	
Departmental Coordinator	Ms. Daina ANDREJEVA
E-mail	daina.andrejeva@lu.lv
FACULTY OF MEDICINE	
Departmental Coordinator	Mr. Ivars PEKAINIS
E-mail	ivars.pekainis@lu.lv
FACULTY OF PHYSICS, MATHEMATICS AND OPTHOMETRY	
Departmental Coordinator, Coordinator for Department of Physics	Doc. Imants Kaldre
E-mail	imants.kaldre@lu.lv
Coordinator for Department of Mathematics	Doc. Olga Grigorenko
E-mail	olga.grigorenko@lu.lv
Coordinator for Department of Optometry	Dace Rutkovska
E-mail	dace.ruktovska@lu.lv
FACULTY OF SOCIAL SCIENCES	
Departmental Coordinator:	Ms. Aleksandra KJAKSTE
E-mail	aleksandra.kjakste@lu.lv
FACULTY OF THEOLOGY	
Departmental Coordinator	Doc. Janis RUDZITIS-NEIMANIS
E-mail	janis.rudzitis@lu.lv